

**PRECAST
CONCRETE
VAULT or FLUSH
TOILET
BUILDINGS
Aspen 60**

UBC PRECAST

PRECAST CONCRETE PRODUCTS

PRECAST CONCRETE / GENERAL CONSTRUCTION

Aspen 60



ABOVE PHOTOS: Barnwood exterior walls with Simulated Cedar shake Roofs. Various colors. Installation takes just a few hours. Double installation or single UBC Precast is the answer.

Durability Through Engineering:

- Vault or Flush type, the **ASPEN 60** is designed for the most extreme conditions for wind, snow, and seismic activities.
- Protective screens with covered entry shield against wind and weather, and provides additional privacy.
- Cleaning is made easy through hard durable finishes.

The Aspen 60 Features:

- Sweet Smelling Technology (SST) If Vaults are used. 12 inch Polyethylene Vent Pipes allow the flow of air from the vault to escape through the vent and not into the building. The building is orientated so that the rear is South to allow the pipe to heat and draw air from the vault. Wall vents are positioned to create a positive air pressure on the interior of the unit also dramatically reducing the air from the vault getting into the inside.
- ADA, Federal Accessibility, & Title 24 compliant. Whether vault or flush type UBC units comply with all ADA, Federal Accessibility, & title 24 regulations.
- 60" Diameter interior turning radius.(See Floor Plan).
- Cross linked Polyethylene toilet risers. Vitreous China fixtures. (Flush Type only). Stainless Steel fixtures are optional.

CONCRETE

MIX DESIGN:

UBC uses only the best components. Our standard mix design reaches over 5000 psi. (Higher strengths are optional). Concrete provides a long lasting, easy to clean surface. Two part epoxy paint on the reinforced 4 inch thick interior walls and 5 inch floor create a clean bright surface. just wash it down with soap and water. The life of concrete far out performs other materials.

Concrete will not burn or rot and is highly vandal resistant.

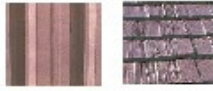
AVAILABLE IN THESE TEXTURES:

Walls:



Barnwood Stucco Exposed

Roofs:



Metal Rib Cedar Shake



Installation by safe professional crews.



Polyethylene Toilet

**CUSTOM FINISHES ARE AVAILABLE, OVER 25
DIFFERENT COLORS AVAILABLE.**

METAL WORK, STEEL DOORS and WINDOWS:

- Heavy gauge steel doors and windows.
- Primed and coated with two coats enamel.
- Door and Window frames are cast into the walls.
- Window glazing is 1/4 Lexan.

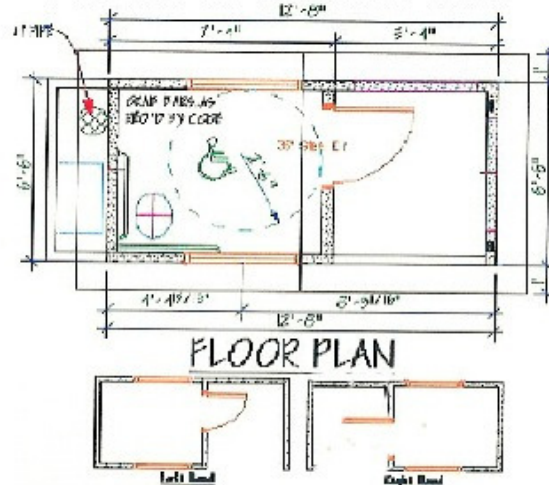
INTERIOR Walls & Floor of BUILDING: Two-part gloss epoxy white on walls, gray color on floors.

INTERIOR SURFACE OF TOILET VAULT: Coal tar epoxy. ABS Liner with embeds, or as specified.

ADA COMPLIANT LOCKSET and HARDWARE:

- Commercial Grade Lever lock ADA compliant.
- Deadbolt available as optional equipment.
- Spring Hinges or door Closer.
- Louvers are cast into walls or mounted in doors, Anemostat or equal.
- Satin Finish on all hardware.

ASPEN 60 FLOOR PLAN



SIGNS: Signs are as shown in photos. White on brown background, non-reflective face, 12" x 12" with rounded corners. Signs are Lexan, 1/4 inch thick. Symbols on rear of sign to prevent vandalism and damage to symbols.

GRAB BARS: Bars are stainless steel, 1-1/2" outside diameter tubing, satin finish, 1-1/2 inch wall clearance as per ADA requirements.

Vent pipes: Vault type only, allow free air flow from both vaults and prevent cross venting. Smell goes through the vent pipe and not in the building.



E-mail: ubcprecast@msn.com

Website: www.ubcprecast.com

Approved by:



**Customization
is available**

UBC

464 West Hwy. 26
Blackfoot, ID 83221
(208) 681-2685
Fax: (208) 785-4807

PRECAST CONCRETE PRODUCTS

PRECAST CONCRETE / GENERAL CONSTRUCTION