

**PRECAST
CONCRETE
FLUSH
TOILET
BUILDINGS**

Yosemite

UBC PRECAST

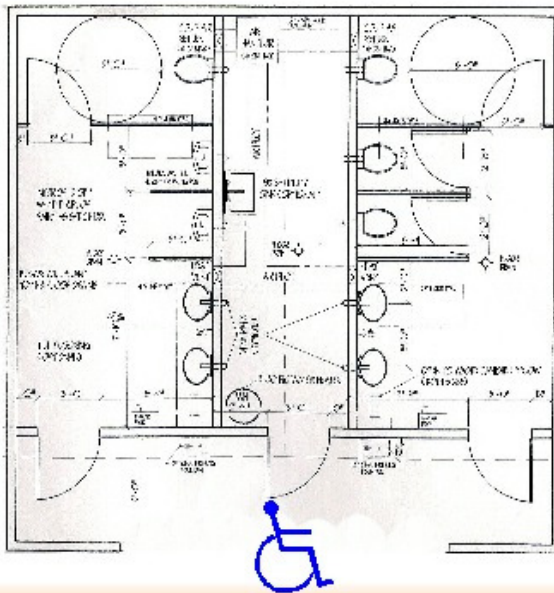
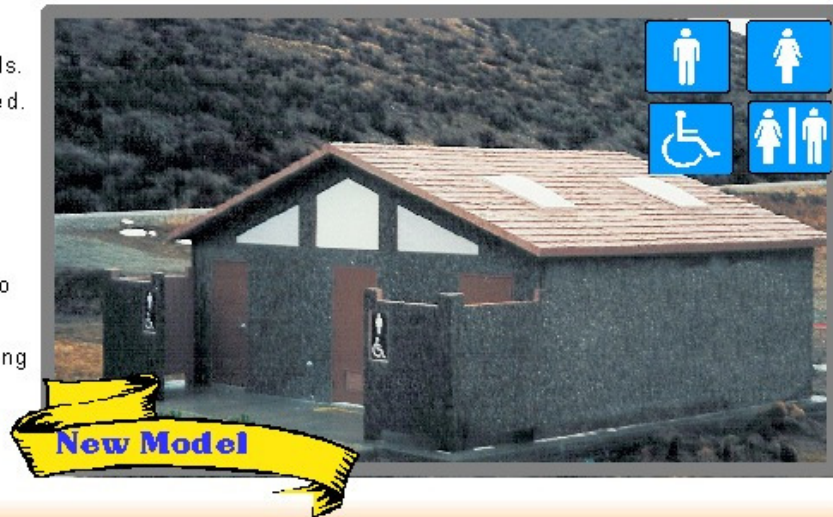
PRECAST CONCRETE PRODUCTS

PRECAST CONCRETE / GENERAL CONSTRUCTION

Features

- Precast Concrete Durability.
- Two Standard Flush type Stalls, womens. Wall Mount concealed.
- One Handicap Stall per side.
- Two Urinals & One Standard Mens Side. (See Floor Plan).
- Two Lavatories per side.
- Skylights allow natural light to reflect inside saving power.
- Utilities, Electrical and plumbing concealed in chase.
- Stainless fixtures, optional.
- Large Chase for storage.

Yosemite



FLOOR PLAN



ABOVE: concealed flush type toilet fixture. LEFT: Typical toilet partition.

- Over 25 various earthtone colors
- Several Textures available
- Complies with ADA & Federal Accessibility Standards & Title 24
- Optional Showers

CONCRETE

MIX DESIGN:

- We proportion the cement, aggregate and water to obtain concrete with long lasting durability.
- Minimum cement content: 6.5 sacks per cubic yd. Maximum water-cement ratio: 5.0 gallons per sack.

PSI 5000 or greater @ 28 days.

DURABLE CONCRETE CONSTRUCTION
EASY TO CLEAN, JUST WASH WITH SOAP AND WATER.

CONCRETE WILL NOT BURN OR ROT
AND IS HIGHLY VANDAL RESISTANT.

FLUSH TYPE

MORE COMPLETE DRAWINGS &
SPECIFICATIONS AVAILABLE UPON REQUEST.



FINISHES

METAL WORK, STEEL DOORS:

- ♦ One coat metal primer.
- ♦ Two coats enamel.
- ♦ Color of enamel: As specified.

EXTERIOR: As per customer request. See standard textures below.

INTERIOR WALLS OF BUILDING: Two-part gloss epoxy concrete enamel, white color.

LOCKSET:

- ♦ Lever handle ADA compliant.
- ♦ Satin Finish on Lever.

SIGNS:

- ♦ Standard 12 X 12 inch white on brown background.
- ♦ Lexan 1/4 inch. Symbol on back side for protection.

Installation by safe,
professional crews
REMOTE SITES NO
PROBLEM.



YOSEMITE MODEL:

All materials & components are
proudly made in the USA.

Remember September 11th.



E-mail: ubcprecast@msn.com

www.ubcprecast.com

Approved by:



Customization
is available

AVAILABLE IN THESE TEXTURES:

Walls:



Barnwood



Stucco



Exposed



Metal Rib

Roofs:



Cedar Shake

UBC

PRECAST CONCRETE PRODUCTS

PRECAST CONCRETE / GENERAL CONSTRUCTION

464 West Highway 26
Blackfoot, ID 83221
(208) 681-2665
Fax: (208) 785-4807